



2025



# KAMALA NIKETAN

## IB-PYP SCHOOL







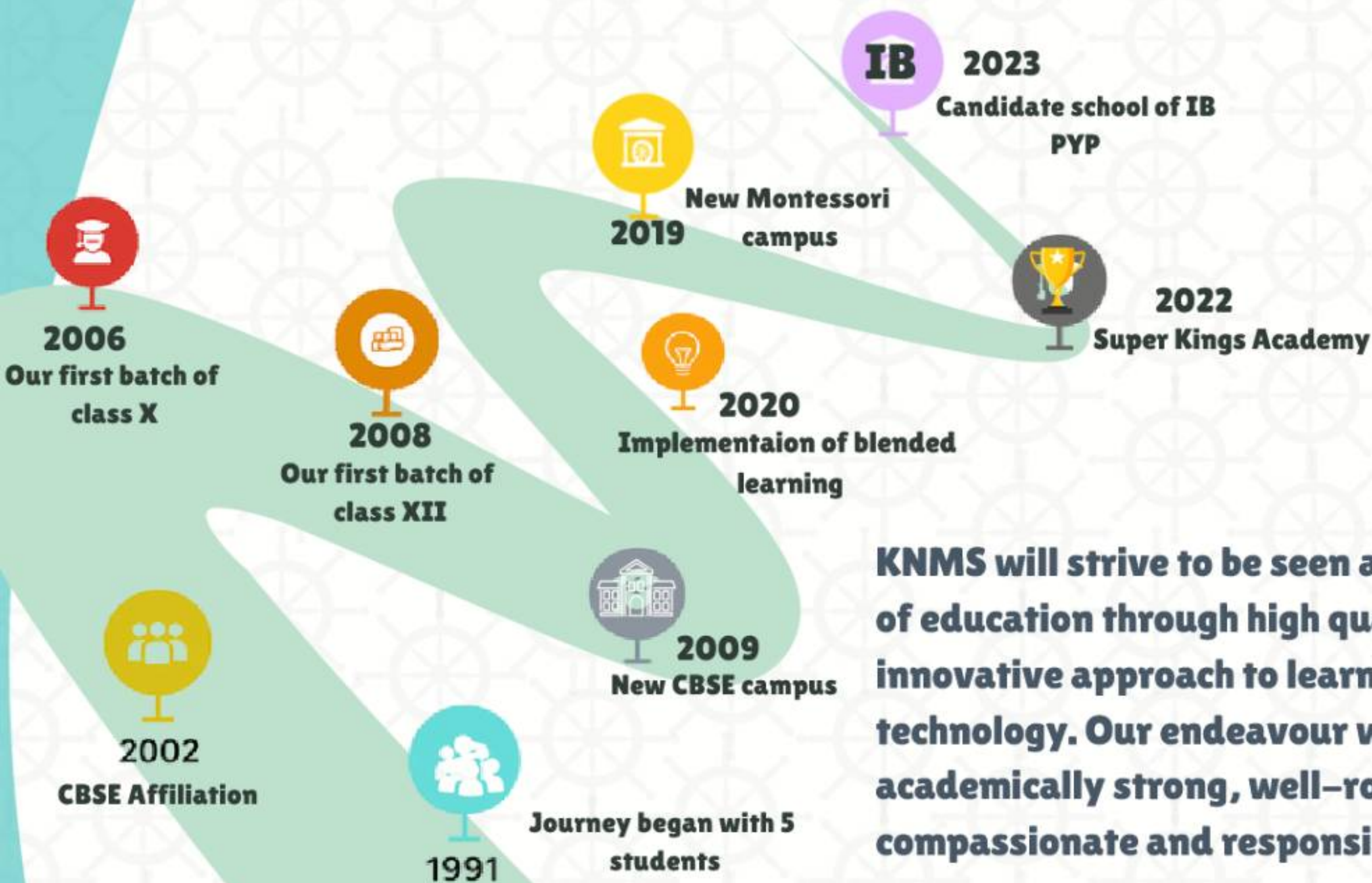
# **What is IB (International Baccalaureate)**

- **The IB is an organization dedicated to high quality education throughout the world, founded in Switzerland in the year 1968**
- **The International Baccalaureate aims to develop inquiring, knowledgeable and caring young people who help to create a better and more peaceful world through intercultural understanding and respect.**





# What does education mean to you



**KNMS will strive to be seen as a premier school of education through high quality content, an innovative approach to learning, and usage of technology. Our endeavour will be to create academically strong, well-rounded, compassionate and responsible global citizens.**



# What is IB PYP – Learners strive to be

Inquirers



Open-Minded



Knowledgeable



Caring



Thinker



Risk-taker



Communicator



Balanced



Principled



Reflective





# Approaches to learning in IB



**social skills**



**Research skills**



**Thinking skills**

## APPROACHES TO LEARNING



**Self management skills**



**Communication skills**





# **KN IB–PYP :A shift from a conventional classroom**



**Material – primary source**

**Teacher – facilitator**

**Knowledge – experiences**





# KN IB-PYP :A shift from a conventional classroom



**Agency – taking action**

**Concept focus**

**Parental involvement**



# Approaches to learning in IB



**Respect for cultures**



**Responsible citizen**



**Awareness of the world**



# Transdisciplinary learning at KN IB–PYP

**Transdisciplinary learning in the IB–PYP connects subjects through meaningful, real–world themes. This approach nurtures holistic development and prepares learners to be globally minded and lifelong inquirers.**





# **Inquiry in the classroom**

**Inquiry in the IB classroom empowers students to ask questions, explore ideas, and construct their own understanding.**





# Assessments



**Before the unit begins.. establish success criteria**



**Measure current  
understanding and needs**



**Through out the unit**



**Monitor and  
document  
learning**



**Student individual goals**



**At the end of a unit/term...report on learning**





# Sneak Peek of the Library





# Art Room





# Future classroom





## **How to Apply for Admissions?**

- **Visit Our school office**
- **Fill out the Registration form**
- **Pay Application Fee and collect the Application Form**
- **Submit the application form with specific enclosures**
- **Prepare for Assessment/Interview**





# **Admissions information**

## **Important dates–**

- **Admission for Class I to IV – December**
- **School start date – June 2025**

## **Contact information**

- **Email: [office@kamalaniketan.com](mailto:office@kamalaniketan.com)**
- **Phone: +91 7373791041/7373791042**
- **Website: [www.kamalaniketan.com](http://www.kamalaniketan.com)**







2025



**"Step into a world of inquiry and imagination with Kamala Niketan's IB PYP stream. Together, let's foster lifelong learners by nurturing curiosity, critical thinking, and the foundational skills needed to thrive in a rapidly changing world."**

## Contact Us

**Email:** [office@kamalaniketan.com](mailto:office@kamalaniketan.com)

**Phone:** +91 7373791041/7373791042

**Website:** [www.kamalaniketan.com](http://www.kamalaniketan.com)



**Kamala Niketan**



**kamala.niketan**

**ib.kamalaniketan**

